



## Roamer

The Rock VPN Roamer is an elegant solution for secure roaming access to your company network. The Roamer uses the concept of a Virtual IP address which transparently allows applications secure access to company resources such as file servers and e-mail servers, while at the same time providing normal Internet access to the outside world.

## Product Description

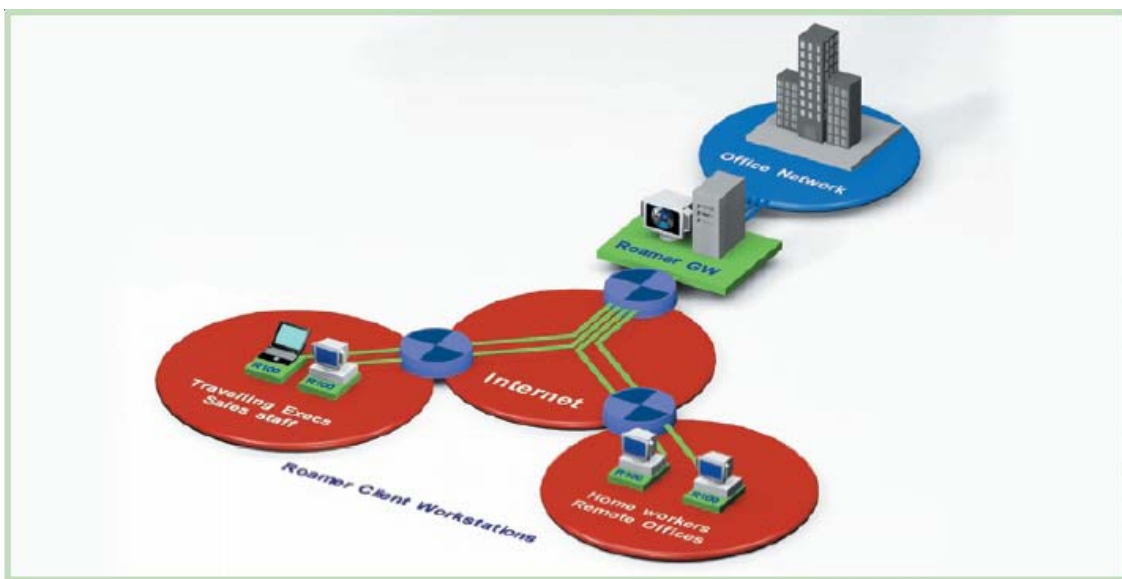
The Roamer is a software package consisting of two standard components:

### Roamer Gateway

The Roamer Gateway is installed on any standard server, allowing remote users such as sales executives with laptops to connect to the network as if they were sitting inside the company. The Roamer Gateway is an out-of-the-box solution that includes the management software required to configure user access profiles, network configuration and to issue Digital Certificates to users. The specialised Rock VPN Appliance managed using the Central Manager may also be used to the same effect.

### Roamer Clients

Users download the Client software from the Roamer Gateway using browser software. Once installed, an easy enrolment procedure is followed to activate the user. The Roamer Clients can also be configured to restrict a remote user's access. For instance use can be restricted to corporate networks while connected to the Roamer gateway. Synchronisation of policies and configuration changes take place automatically.





## Benefits

For people working from home, mobile professionals or contractors needing secure access to internal company resources, the Roamer provides a simple and elegant way to work securely. You can take your laptop, connect to your nearest Internet Service Provider and log on to the corporate network through the Roamer Gateway. No more long-distance phone calls, complex configurations and maintenance nightmares. Just the power and benefits of secure remote access to your business.

## Features and Specifications

### ***General Features:***

- Easy installation and deployment
- Gateway issues clients with virtual IP addresses
- Scalable to multiple gateways
  - Redundancy
  - Load balancing
  - Centrally manageable using Central Manager

### ***Gateway platforms supported:***

- Windows 2000
- Windows NT 4.0 (SP 3 and above)

### ***Client platforms supported:***

- Windows 95, 98 and ME
- Windows NT (SP 3 and above)
- Windows 2000
- Windows XP

### ***Network support:***

- Ethernet
- Dial-up

### ***Standards supported:***

- IETF IPSec
- ISO X.509 v3
- PKCS #1, #10
- SCEP / CMP

### ***IPSec features supported:***

- ESP in tunnel mode
- NAT Traversal
- Path MTU discovery



***Built-in CA:***

- One-click certificate issuing
- Fully X.509v3 compliant
- Use built-in or 3rd party CA

***External Certification Authorities supported:***

- VeriSign
- RSA Data Security Certificate Server (Keon)
- Baltimore
- Entrust

***Certificate Management:***

- Automatic retrieval and processing of certificates and Certificate Revocation Lists (CRLs)
- X.509v3 certificates supported
- Automatic certificate enrolment using SCEP/CMP

***Management:***

- Friendly Graphical User Interface
- User Registration
- Client package download
- Automatic user certificate enrolment
- PKI integration and management
- Automatic remote policy updates
- Granular control based on IP address, subnet address, address range, port and protocol.
- Centrally manageable

## Contact Details

Tel: +603-6203 5303  
Fax: +603-6203 5302  
URL: [www.rockvpn.com](http://www.rockvpn.com)

For more information or support requests, please visit [www.rockvpn.com](http://www.rockvpn.com) or [www.mynetsec.com](http://www.mynetsec.com).

*Performance figures and data quoted in this document are typical and must be confirmed before they become applicable to any order or contract. Network Security Solutions reserves the right to make alterations or amendments to specifications. Rock VPN is a registered trade mark of Network Security Solutions. All other trademarks are the property of their respective owners.*